

Evaluation Services

- Study Management
- Risk Assessment & workshops
- Reserve Estimation
- Competent Person Reports
- Qualified Person Reports
- Technical Due Diligence
- Independent Technical Expert Reports
- Operation Reviews
- Project Development Strategies
- Accident Investigations



Lebedinsky, Magnetite Mine- Russia

Operations Support

- Safety Management
- Trial Mine Planning
- Drill and Blast Design
- Mine Optimization
- Mine Design
- Mine Production Scheduling
- Mine Equipment Selection
- Contract Mining Strategy
- Contract Mining Documentation
- Mine Rehabilitation Planning

About KBPL

Kent Bannister, FAusIMM, CP, ARMIT

After graduating in 1974 and mining for two years in Kalgoorlie and Mt Isa, Kent has over 39 years of experience in base metals, gold, uranium, manganese, mineral sands, nickel and iron ore. During this time, Kent has held positions as Mining Engineer, Senior Mining Engineer, Assistant Superintendent, Principal Engineer, Mine Manager, Registered Manager, General Manager, Consultant, Managing Consultant, Technical Advisor and Company Director. Kent has provided consulting services for over 25 years and has undertaken or led more than 100 mineral project studies. The consulting teams that Kent has managed have been responsible for completing more than 500 studies for Australian and international companies.

KBPL was formed in 2013 to provide independent advisory services.



KENT BANNISTER PTY LTD

Phone 0418747912

Kent.bannister@kbpl.com.au

<http://www.kbpl.com.au/>

Iron Ore Customers

- Sojitz,
- Leighton,
- Hatch,
- BHPE,
- BHPB,
- BHP Steel,
- BHPNZ,
- Riotinto,
- Xstrata,
- European Bank,
- Matalloinvest, JSC Olkon, JSC Karelsky Okatysh,
- Kumba Shisen,
- Anglo American,
- Deutsche Bank,
- HSBC,
- ANZ.

KENT BANNISTER PTY LTD

Iron Ore Capability and Services

Mine Management

A lifetime of experience in Open cut Mining, Registered management roles.

1st Class Mine Management Certificates for:

- Western Australia
- Queensland
- South Australia



Large Diameter Blast Holes - Pilbara

Project Development Strategies

KBPL has assisted in the planning and development of the following projects

- Great Victoria Gold, Marvel Loch, (\$3M)
- Mt Fisher Mine, (\$10M)
- Darlot Mine, (\$4M)
- Southdown Project, (\$3B)

Iron Ore Projects

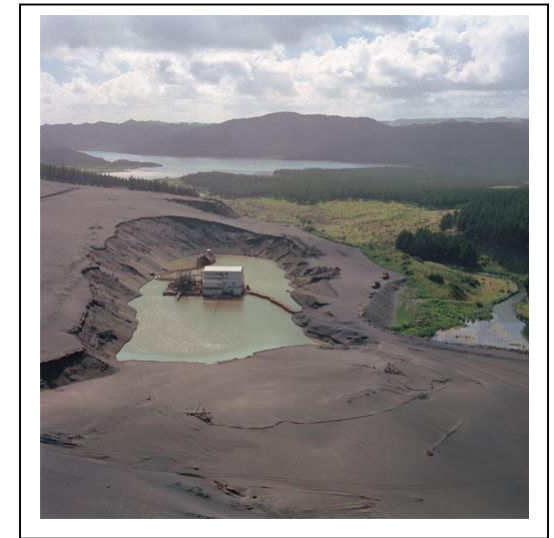
Kent Bannister has been involved in studies for the following iron ore projects. There is a complete listing of studies and services directly or managed by Kent Bannister on the KBPL web site

www.KBPL.com.au.

- Sojitz Resources and Technology, Southdown Magnetite Project,
- Xstrata, Zanaga, Iron Ore Project,
- Ularring PFS, MacArthur Iron Ore Project,
- Kumba ,Sishen, Expansion Project,
- BHP Steel- South Middle Back Ranges,
- BHPIO Whaleback ,
- BHPIO Nimingarra,
- BHPIO Altamira,
- BHPIO Koolan,
- BHPIO MAC,
- BHPIO, Yandi,
- BHPIO Yarri,
- BHPNZ Taharoa,
- BHP HBI,
- Chevron Snake River, Crest Deposit,
- Ivanhoe, Savage River,
- Royal Resources, Razer back Magnetite,
- Padbury Peak Hill,
- Rob River Associates, West Angelas,
- Severstal Kostomuska,
- Severstal Olenegorsk,
- Deutsche Bank SASE,
- Bellzone, Kalia Forecariah,
- IMMECO, IMPASCO Iran.

Technology Governance

Public company boards provide governance on behalf of shareholders. The Board of Directors typically establishes committees, consisting of board members, with appropriate experience, to assist the Board in exercising its authority. KBPL can assist Boards with Reviews and Audits of Mining Operations



Taharoa Iron Sands Dredging Operation



KENT BANNISTER PTY LTD
Phone 0418747912
Kent.bannister@kbpl.com.au
<http://www.kbpl.com.au/>